



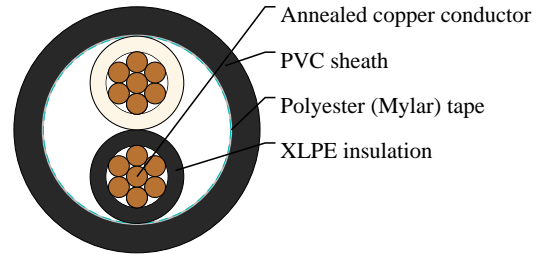
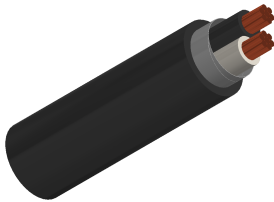
# Caledonian

JIS Code Power & Control Cables

www.caledonian-cables.com

marketing@caledonian-cables.com

## CV 2C10



## APPLICATIONS

For general purpose power distribution in wet or dry locations, installed in air, in conduit or duct, or directly buried.

## STANDARDS

IEC 60502-1

## CABLE CONSTRUCTION

Conductor: Circle or circle compacted stranded annealed copper wires

Insulation: Cross-linked polyethylene(XLPE)

Filler: Non-hygroscopic material(optional)

Binding tape: Polyester (Mylar) tape (optional)

Sheath: Polyvinyl chloride (PVC), Black color.(A special flame retardant sheath can be supplied)

## COLOUR CODE

2 cores- Black and white

## PHYSICAL AND THERMAL PROPERTIES

Maximum conductor temperature 90°C

Circuit voltage not exceeding 600 volts

Test voltage 3500 volts

## DIMENSION AND PARAMETERS

No. of Cores	Nominal Cross-sectional Area	No. and Dia. of Wires	Conductor Diameter	Nominal Insulation Thickness	Nominal Sheath Thickness	Approx. Overall Diameter	Approx. Weight	Max. DC Resistance at 20°C
	mm <sup>2</sup>	no./mm	mm	mm	mm	mm	kg/km	Ω/km
2	10	7/1.35	4.05	0.7	1.8	17	330	1.83